



University at Buffalo

Alberti Center for  
Bullying Abuse Prevention

Graduate School of Education



# Alberti Center for Bullying Abuse Prevention

**Annual Report**

**July 1, 2015 – June 30, 2016**



University at Buffalo

Graduate School of Education

## ALBERTI CENTER TEAM

**Dr. Jean M. Alberti**, Benefactor

**Dr. Amanda B. Nickerson**, Director

**Brie Kishel**, Program and Operations Manager

**Dr. Kathleen Allen**, Training and Evaluation Specialist

**Dr. Danielle Guttman**, Research Associate (Adjunct)

**Erin Cook**, Graduate Assistant

**Melissa Dudley**, Graduate Assistant

**Toni Torchia**, Student Programming Specialist

**Sebastian Beng Cheong**, Research Assistant

**Samantha VanHout**, Research Assistant

**Shauna Mauch**, Research Assistant

**Courtney Santasero**, Student Volunteer



## ALBERTI CENTER MISSION

*The mission of the Alberti Center is to reduce bullying abuse in schools and in the community by contributing knowledge and providing evidence-based tools to effectively change the language, attitudes, and behaviors of educators, parents, students, and society. The center will be a national resource on the prevention of bullying and other antisocial behaviors among school children, as well as provide research and information that address these behaviors.*

## HISTORY OF THE CENTER

*A generous gift from Graduate School of Education alumna Jean M. Alberti (Ph.D. '70, Educational Psychology) established the Dr. Jean M. Alberti Center for the Prevention of Bullying Abuse and School Violence (Alberti Center for Bullying Abuse Prevention) at the University at Buffalo. The center was introduced to the public on April 27, 2010, through its symposium, "Prevention of Bullying Abuse and School Violence," and was officially launched in July of 2011, when Amanda Nickerson, Ph.D., became the inaugural director.*

## STATEMENT OF CONTRIBUTIONS AND IMPACT

It has been a busy and exciting year as we work to fulfill our important mission. This annual report highlights our activities as they relate to the mission and vision of the Alberti Center for Bullying Abuse Prevention, the Graduate School of Education (GSE), and the University at Buffalo, the State University of New York. We showcase our partners, including faculty affiliates, advisory council members, research collaborators, funders, sponsors, award winners, and community members throughout this report. These collaborative partnerships remain as the cornerstone of our work.

In relation to our mission of contributing knowledge, the Alberti Center affiliated faculty have published their work in peer refereed journals in various fields and presented at a number of professional conferences. Faculty members have been very active in pursuing and securing external funding for research and evaluation projects and have received honors and appointments in recognition of their scholarship. Finally, the Alberti Center has supported the contributions of exceptional early career scholars in the field of bullying abuse prevention through its annual award.



Our engagement, through interprofessional collaboration and providing evidence-based tools to our schools and communities for a better quality of life, continues to be a critical part of the mission of the Alberti Center, the GSE, and UB. In this report, we recognize our advisory council, consisting of internationally renowned scholars, and pillars of the Western New York community representing the fields of law, education, and human services. We also note the multiple presentations we have conducted in schools and communities. Our various sponsored events, including our annual conference, colloquium series, BAND Against Bullying performing arts competition for area high schools, and many others, are highlighted in this report.

The Alberti Center actively supports the GSE's pedagogy of inquiry, engagement, and impact. Our contributions in this area have benefitted both UB students as well as practitioners through the Center for Continuing and Professional Education and as a New York State Education Department approved provider of the Dignity for All Students Act training. It is an honor to be able to collaborate with such talented and generous partners in working to reduce bullying abuse in our schools and communities.

## Peer Refereed Journal Articles

- Blakely-McClure, S. J. & **Ostrov, J. M.** (2016). Relational aggression, victimization and self-concept: Understanding pathways that lead to low self-concept. *Journal of Youth and Adolescence*, 45, 376-390. doi: 10.1007/s10964-015-0357-2
- Cook, E. E., Nickerson, A. B., Werth, J. M., & Allen, K. P.** (2016). Service providers' attributions about and responses to bullying of individuals with disabilities. *Journal of Intellectual Disabilities*. Advanced online publication. doi: 10.1177/1744629516650127
- Cook-Cottone, C.**, Serwacki, M., Guyker, W., Sodano, S., **Nickerson, A. B.**, Keddie-Olka, E., & **Anderson, L.** (2016). The role of anxiety on the experience of peer victimization and eating disorder risk. *School Mental Health*. Advanced online publication [http://link.springer.com/article/10.1007/s12310-016-9178-z?wt\\_mc=internal.event.1.SEM.ArticleAuthorOnlineFirst](http://link.springer.com/article/10.1007/s12310-016-9178-z?wt_mc=internal.event.1.SEM.ArticleAuthorOnlineFirst)
- Cosgrove, H., & **Nickerson, A. B.** (2015). Anti-bullying/harassment legislation and educator perceptions of severity, effectiveness, and school climate: A cross-sectional analysis. *Educational Policy*. Advanced online publication. <http://epx.sagepub.com/content/early/2015/09/15/0895904815604217.full.pdf+html>
- Nickerson, A. B.**, Aloe, A. M., & **Werth, J. M.** (2015). The relation of empathy and defending in bullying: A meta-analytic investigation. *School Psychology Review*, 44, 372-390.
- Nickerson, A. B.**, Feeley, T. H., & Tsay-Vogel, M. (2016). Applying mass communication theory to bystander intervention in bullying. *Adolescent Research Review*. Advanced online publication. doi: 10.1007/s40894-016-0030-3
- Ostrov, J.M.**, Godleski, S. A., Kamper, K. E., Blakely-McClure, S. J., & Celenza, L. (2015). Replication and extension of the early childhood friendship project: Effects on physical and relational bullying. *School Psychology Review*, 44, 445-463.
- Rose, C. A., **Nickerson, A. B.**, & Stormont, M., & (2015). Advancing bullying research from a socio-ecological lens: An introduction to the special issue. *School Psychology Review*, 44, 339-352.

## Journal Articles (other)

SAMHSA Now Is The Time Technical Assistance Center [Lead contributors **Guttman-Lapin, D., Nickerson, A., O'Malley, M., Renshaw, T., Silva, K., & Sockalingam, S.**] (2016). *School mental health referral pathways toolkit*. Rockville, MD: Substance Abuse and Mental Health Services Administration.

## Book

Brock, S. E., **Nickerson, A. B.**, Reeves, M. A., Conolly, C., Jimerson, S. R., Pesce, R. C., & Lazzaro, B. (2016). *School crisis prevention and intervention: The PREPaRE model (2<sup>nd</sup> ed.)*. Bethesda, MD: National Association of School Psychologists.

## Book Chapters

Dipeolu, A., **Cook-Cottone, C.**, Lee, G., Donnelly, J. P., Janikowski, T. J., **Reynolds, A. L.**, & Boling, T. (2016). A concept map of campers' perceptions of camp experience: Implications for the practice of family counseling. *The Family Journal: Counseling and Therapy for Couples and Families*, 1-8. doi: 10.1177/1066480716628566

Murray-Close, D., Nelson, D. A., **Ostrov, J. M.**, & Casas, J. F., & Crick, N. R. (2016). Relational aggression: A developmental psychopathology perspective. In D. Cicchetti (Ed). *Developmental Psychopathology (3<sup>rd</sup> Ed.)*. Hoboken, NJ: Wiley.

**Reynolds, A. L.** (2016). Planting a forest: The legacy of Louise Douce. *The Counseling Psychologist*. 44, 1-20. doi: 10.1177/0011000016640602

## Articles for Practitioners (Peer Refereed)

Crepeau-Hobson, F., **Nickerson, A.**, & **Cook, E.** (2016, March/April). The final report of the Sandy Hook Advisory Commission: Summary of part III. *Communiqué*, 44(6), 14-16.

Crepeau-Hobson, F., **Nickerson, A.**, & **Cook, E.** (2016, January/February). The final report of the Sandy Hook Advisory Commission: Summary of parts 1 and II. *Communiqué*, 44(5), 1, 24-25.

## Professional Presentations

Jenkins, L., & **Nickerson, A.** (2016, February). *Bullying participant roles and gender as predictors of bystander intervention*. Paper presented at the annual meeting of the National Association of School Psychologists, New Orleans, LA.

**Livingston, J. A.**, Derrick, J. L., Miller, K. E., Testa, M., & **Nickerson, A. B.** (2015, June). *Family cohesion moderates the effects of bully victimization on adolescent alcohol use*. Poster presented at the annual meeting of the Research Society on Alcoholism, San Antonio, TX.

Miller, K. E., **Livingston, J.**, Testa, M. & **Nickerson, A.** (2015, April). *Energy drink use as a predictor of risk-taking and adverse outcomes in middle adolescents*. Poster presented at the annual meeting of the Society for Research on Adolescence, Baltimore, MD.

Reeves, M.A., & **Nickerson, A. B.** (2015, December). *School safety: Prevention and intervention for bullying and crisis events*. Invited lecture presented at Security 100 Summit K-12, Scottsdale, AZ.



**Nickerson, A. B.** (2015, August). *How can schools prepare for and respond to crisis events?* In M.J. Mayer (Chair), *How safe are our schools?* Symposium presented at the American Psychological Association Annual Meeting, Toronto, Canada.

**Torchia, T., & Nickerson, A.** (2016, February). *School climate and bystander intervention: Tools for practitioners.* Mini-skills workshop presented at the annual meeting of the National Association of School Psychologists, New Orleans, LA.

### Invited Professional Presentations:

Pantaleo, A., **Nickerson, A. B.**, Cangelosi, M., Sellet, M., & Allen, L. (2015, October). *The mobilization of regional crisis response teams: A Long Island experience 2015.* Panel presented at the New York Association of School Psychologists' Annual Conference, Verona, NY.

**Nickerson, A. B.** (2015, October). *When crisis strikes: Effective elements of the school and community response.* Plenary session presented at the Southern Tier Multi-Disciplinary Trauma Summit, Ellicottville, NY.

**Ostrov, J. M.** (2015, November). *The development of relational bullying: Implications for practice.* The Pennsylvania State University, Erie Campus (Erie, PA).

**Ostrov, J. M.** (2015, October). Keynote address on relational bullying and discussion panels delivered at a conference on developmental and relationship implications for bullying and bullying prevention at St. John's University (Queens, NY).



### Funded Research

**Livingston, J.** (PI); Eiden, R., & Leonard, K. (Co-Is). "Developmental pathways of teen dating violence in a high-risk sample." National Institute of Justice. (\$798,396). 1/1/13 – 12/31/15.

**Rina Eiden and Amanda Nickerson** (Multiple PI). "Developmental pathways of violence and substance use in a high risk sample." National Institute of Health (\$3,395,047). 7/1/2015-3/31/2020. 1R01DA041231-01 (NIDA).

**Jennifer Livingston and Amanda Nickerson** (Multiple PI). "Evaluation of Second Step family videos to promote child personal safety." Committee for Children (\$249,925). 10/1/2015-9/30/2016.

**Ostrov, J. M.** (PI): "The development of forms and functions of aggression during early childhood" National Science Foundation (\$550,000). Start date: 3/1/2015.

**Jennifer Livingston** (PI) and **Amanda Nickerson** (Co-I). "Peer victimization as a pathway to adolescent substance use." National Institute for Alcohol Abuse & Alcoholism (\$1,883,110). 8/1/2013-7/31/2018. R01AA021169 (NIAAA).

**Amanda Nickerson** (PI). "PREPaRE Crisis Prevention and Intervention Training Curriculum program evaluation." National Association of School Psychologists (\$63,888). 8/15/2011-8/14/2016.

## Grant Proposals Submitted

**Amanda Nickerson** and Shane Jimerson (Multiple PI). "Impact of comprehensive school safety training on preparedness, interdisciplinary collaboration, and school climate." Institute of Education Science (\$2,419,168).

Sharon Raimondi, Lynn Shanahan, **Amanda Nickerson**, Bridget Hier, Elisabeth Etopio (Multiple PI). "TeachLive: Enhancing pedagogical practice within a stimulated environment." University at Buffalo Graduate School of Education Teaching Grant (\$10,000).

Lyndsay Jenkins (PI); **Amanda Nickerson (mentor)**. "Forms of defending victims of bullying: Concurrent, longitudinal, and classroom predictors." Society for the Study of School Psychology (\$14,759).

## Honors and Appointments

**Kishel, B.** | Community Advisory Committee, Center for Disabilities Studies at UB  
Executive Board, Disability Education and Advocacy Network (DEAN) of WNY  
Advisory Committee Member, BAND Against Bullying (11/14-present)

**Nickerson, A. B.** | Fellow, American Psychological Association (Division 16)  
Advisory Member, Long Island School Practitioner Action Network (1/15-present)  
Advisory Committee Member, BAND Against Bullying (11/12-present)  
Reviewer of the Year, *Journal of School Psychology*, 2015

**Reynolds, A.** | Fellow, American Psychological Association Div. 17 (Society of Counseling Psychology)

**Treadway, D. C.** | Founding Fellow, U.S. Academy on Workplace Bullying, Mobbing, and Abuse

## Alberti Center Early Career Award (2015)

**RECIPIENT –Chad A. Rose, Ph.D.**, Assistant Professor | Department of Special Education| University of Missouri

This award recognizes Dr. Rose as an individual who has made exemplary scholarly contributions to the field of bullying abuse prevention and conducted research that has the potential to influence practice and policy.



### RELEVANT PUBLICATIONS

Espelage, D. L., **Rose, C. A.**, & Polanin, J. R. (2015). Social-emotional learning program to reduce bullying, fighting, and victimization among middle school students with disabilities. *Remedial and Special Education* [Online First]. doi: 10.1177/0741932514564564

Peterson, M. B., & **Rose, C. A.** (2014). Five ways to inform students with learning disabilities about cyberbullying. *Learning Disabilities Forum*, August, 2-5.

**RELEVANT PUBLICATIONS (continued)**

**Rose, C. A.,** Espelage, D. L., Monda-Amaya, L. E., Shogren, K. A., & Aragon, S. R. (2015). Bullying and middle school students with and without specific learning disabilities: An examination of social-ecological predictors. *Journal for Learning Disabilities, 48*, 239-254 doi: 10.1177/0022219413496279.

**Rose, C. A.,** Simpson, C. G., & Moss, A. (2015). The bullying dynamic: Prevalence of involvement among a large-scale sample of middle and high school youth with and without disabilities. *Psychology in the Schools, 52*, 515-531. doi: 10.1002/pits.21840

**Rose, C. A., &** Tynes, B. M. (2015). Longitudinal associations between cybervictimization and mental health among U.S. adolescents. *Journal of Adolescent Health* [Online First]. doi: <http://dx.doi.org/10.1016/j.jadohealth.2015.05.002>

**Rose, C. A.,** Richman, D. M., Fetting, K., Hayner, A., Slavin, C., & Preat, J. (2014). Peer reactions to early childhood aggression in a preschool setting: defenders, encouragers, or neutral bystanders. *Developmental Neurorehabilitation* [Online First]. doi:10.3109/17518423.2014.979955

Tynes, B.M., Hiss, S., Ryan, A., & **Rose, C. A.** (2015). Discrimination in school vs. online contexts, mental health and motivation among diverse adolescents in the US. In C. Davies (Ed.) *The social psychology of the classroom international handbook* (112-121). New York, NY: Routledge.

Tynes, B. M., **Rose, C. A.,** Hiss, S., Umaña-Taylor, A. J., Coleman, N., Mitchell, K. J., & Williams, D., (2014). Virtual environments, online racial discrimination, and adjustment among a diverse, school-based sample of adolescents. *The International Journal of Gaming and Computer-Mediated Simulations* special issue on Virtual Environments, *6*(3), 1-16. doi: 10.4018/ijgcms.2014070101



## ENGAGING: INTERPROFESSIONAL COLLABORATIONS AND EVENTS

### Advisory Council

**Lana D. Benatovich**, President | National Federation for Just Communities of WNY

**Vito Borrello**, Executive Director | National Association for Family, School, & Community Engagement

**Anna R. Cieri, Ph.D.**, Assist. Superintendent, Exceptional Education and Student Services |  
Williamsville Central School District

**Dewey G. Cornell, Ph.D.**, Professor and Endowed Chair, Education | University of Virginia

**Janice L. DeLucia, Ph.D.**, Associate Professor, Counseling, School, & Educational Psychology | University at Buffalo

**Dorothy L. Espelage, Ph.D.**, Professor, Education Psychology | University of Illinois at Urbana-Champaign

**Bruce Goldstein**, Special Counsel | Kenney, Shelton, Liptak, Nowak, LLP

**Jamie M. Ostrov, Ph.D.**, Professor, Psychology | University at Buffalo

**Kevin Penberthy, LCSW**, Deputy Director, Regional Office | New York State OPWDD

**Debra Pepler, Ph.D.**, Distinguished Research Professor | York University

**Amy L. Reynolds, Ph.D.**, Associate Professor, Counseling, School, & Educational Psychology | University at Buffalo

**Reed Stewart, LCSW-R**, Program Director, Beacon Health Strategies

**Susan M. Swearer, Ph.D.**, Professor, School Psychology | University of Nebraska-Lincoln

### Faculty Affiliates

**Ariel Aloe, Ph.D.**, Research Scientist, Graduate School of Education | University at Buffalo & Assistant  
Professor | University of Iowa

**Laura Anderson, Ph.D.**, Assistant Professor, School of Nursing | University at Buffalo

**Catherine P. Cook-Cottone, Ph.D.**, Associate Professor, Counseling, School, & Educational Psychology | University at  
Buffalo

**Janice L. DeLucia, Ph.D.**, Associate Professor, Counseling, School, & Educational Psychology and Program Director,  
School Counseling | University at Buffalo

**Rina D. Eiden, Ph.D.**, Senior Research Scientist, Research Institute on Addictions | University at Buffalo

**Jennifer Livingston, Ph.D.**, Research Scientist, Research Institute on Addictions | University at Buffalo

**Jamie M. Ostrov, Ph.D.**, Professor, Psychology | University at Buffalo

**Amy L. Reynolds, Ph.D.**, Associate Professor, Counseling, School, & Educational Psychology | University at Buffalo

**Darren Treadway, Ph.D.**, Associate Professor, Organization and HR | University at Buffalo

## Presentations in the Community

**Amanda Nickerson**, Presentation for New York State School Social Workers' Association. *Preventing and Intervening with Bullying: Successes, Challenges, and Future Directions*. 2 hours. 25 attendees. June 10, 2016.

**Amanda Nickerson**, Online webinar. *Cyberbullying*. Sponsored by New York State Education Department and New York State Center for School Safety. 1 hour. June 2, 2016.

**Toni Torchia**, Immaculata Academy. *Quality of Relationships: From peers to partners*. Sponsored by Zonta Club of Hamburg/Orchard Park. 1 hour. 150 attendees (students, staff, Zonta members).

**Amanda Nickerson**, Bullying prevention and intervention, Niagara University school counseling course, April 4, 2016. 1 hour, 10 attendees.

**Amanda Nickerson**, PREPaRE workshop 1: Crisis Prevention and Preparedness, Orchard Park Central School District. March 18, 2016. 6.5 contact hours, 28 attendees (school-based mental health professionals, administrators).

**Toni Torchia**, Western New York Children's Psychiatric Center. (March 2016). *Cyberbullying and You*. 1 hour. 50 attendees (staff and students).

**Toni Torchia**, 2 Presentations at Smallwood Elementary School *Making the Most of Our Differences* presented to grades 3-5 and *Embracing Our Differences* presented to grades K-2. February 2016. 2 hours. Total of 150 attendees in grades K-5.

**Toni Torchia**, 2 Presentations for grades 5-6 and 7-8 at West Seneca East Middle School. January 2016. Total of 900 attendees.

**Toni Torchia**, Unity Day with Lancaster High School's Gay Straight Alliance. 1 hour. October 2016. 30 attendees (grades 9-12).

**Toni Torchia**, Workshop at The Hub in Hamburg. October 2015. 18 attendees (students in grades 9-12) and DASA coordinators.

**Melissa Dudley and Courtney Santasero**, UB South Campus "Day of the Girl" event sponsored by Empower Girls Buffalo. 2 hours. 120 attendees.

**Toni Torchia**, *What You Need to Know About Bullying in High School and College*. Upward Bound program summer speaker series. (July, 2015). 1 contact hour, 35 attendees (grades 9-12).



## 2015-2016 Colloquium Series



**September, 2015 – Amanda Nickerson, Ph.D.**

Director, Alberti Center for Bullying Abuse Prevention  
Professor of Counseling, School, and Educational Psychology | University at Buffalo

*Bystanders in Bullying: What We Know and Where To Go*  
50 Attendees



**November, 2014 – Timothy Servoss, Ph.D.**

Assistant Professor, Educational Psychology | Canisius College

**Jeremy Finn, Ph.D.**

Distinguished Professor, Graduate School of Education | University at Buffalo



*Security Measures in American Schools: Are Schools Safer?*  
30 Attendees



**February, 2016 - Rina D. Eiden, Ph.D.**

Senior Research Scientist | Research Institute on Addictions | University at Buffalo

*Children of Substance Using Parents: Pathways to Risk and Resilience*  
55 Attendees



**March, 2016 – Julie C. Bowker, Ph.D.**

Associate Professor of Psychology | University at Buffalo

*The Significance of Friendship and Peer Difficulties During Early Adolescence*  
35 Attendees

## Alberti Center Annual Conference - October 19, 2015

### Morning Keynote Presentation:

*Ending Bullying, Harassment, and Intimidation in our Schools: The Hard Steps Not Yet Taken*

**Maurice Elias, Ph.D.**

Professor of Psychology

Director, Rutgers Social-Emotional Learning Lab

Co-Director, SEL Academy (SELinSchools.org) | Rutgers University



### Panel Discussion:

*Best Practices and Real World Issues from Preschool through High School*

**Tracey Banks**, Early Childhood Direction Center

**Leslie Barr**, Amherst School District

**Robert Coniglio**, Clarence High School

**Maurice Elias, Ph.D.**, Rutgers University

**Jennifer Greif Green, Ph.D.**, Boston University



### Afternoon Keynote Presentation:

*Transitioning to College: The Experience of First-Year Students with a History of Childhood Bullying*  
*sponsored by embraceWNY*

**Jennifer Greif Green, Ph.D**

Assistant Professor of Special Education | Boston University

Recipient of the 2014 Early Career Award



## 2015 Conference Sponsors

### Platinum Sponsor

**embraceWNY**

### Gold Sponsors

**Buffalo Teachers Federation**

**Child and Family Services**

**Hodgson Russ**

**National Federation for Just Communities of WNY, Inc.**

**NY Association of School Psychologists**

**UB Graduate School of Education**

**UB Office of Equity, Diversity and Inclusion**



## Co-Sponsored Events

Several local schools participate in BAND Against Bullying by integrating the arts into a theatrical, dance or musical performance related to the theme of Dignity. The acts are evaluated by a panel of judges on their illustration of dignity awareness. All participating schools perform at the University at Buffalo Center for the Arts. It is an eventful evening, including valuable information on bullying awareness, exceptional talent and collaboration among students, and an opportunity to raise money for the prevention of bullying in schools. Proceeds benefit each participating school, and the continued development of the program.



**BAND Against Bullying IV** (April 2016) Presented by Hodgson Russ, M&T Band, Kiss 98.5, University at Buffalo

**UB 13<sup>th</sup> annual Safe Schools Seminar** (March 2016) Preventing and Responding to Violent Threats: Tools for Schools and Law Enforcement, 900+ attendees (school personnel, law enforcement, etc.)



***The David Dance* film screening.** Thursday, March 3, 2016. Amherst Dipson Theatre. Co-sponsored with embraceWNY. Sold out. 125 Attendees.

## Alberti Center Presence at Other Events/Venues

**Developmental Disabilities Awareness Day (May 2016)**

**"Embrace the Difference" Giveback Day (April 2016)**

**"Spread the Word to End the Word" (March 2016)**

**Dr. Seuss's Birthday Celebration. Reading of "The Sneetches" (March 2016)**

**"UB Adopt-a-Family" for Christmas event (December 2015)**

**Queen of Heaven School's "Run, Walk, Roll Against Bullying 5K" (October 2015)**

## Media Coverage & Press Releases

[Anti-bullying presentation given at academy](#) - 5/19/16

[Focus group seeks to help communication about sexual abuse](#) - 5/3/16

[UB Researchers to study gun violence among youths](#) - 2/24/16

[Talking to kids about deadly events](#) - 11/4/15

[Queen of Heaven School race to help combat bullying](#) - 10/7/15

[UB Alberti Center for Bullying Abuse Prevention Hosting Annual Conference](#) - 10/6/15



[Bullying Abuse Prevention in Buffalo](#) - 10/1/15

[RIA, Bullying Center Partner on Grant](#) - 8/20/15

[RIA partners with Alberti Bullying Center for \\$3.4 million grant on high-risk youth](#) - 8/19/15

[Free2Luv Teams Up with the Alberti Center](#) - 8/6/15

## Social Media Efforts/Center Reach



**511 Followers**



**528 Followers**



**1115 Contacts**



**83 Members**



## Pedagogy of Inquiry, Engagement, and Impact

### Center for Continuing and Professional Education (CCPE) Courses

CEP 752 - Bullying Prevention and Intervention (online)

\*\*\*\*\*

CEP 754 - School Crisis Prevention and Preparedness

PREPaRE Workshop 1: *Crisis Prevention and Preparedness: Comprehensive School Safety Planning*

\*\*\*\*\*

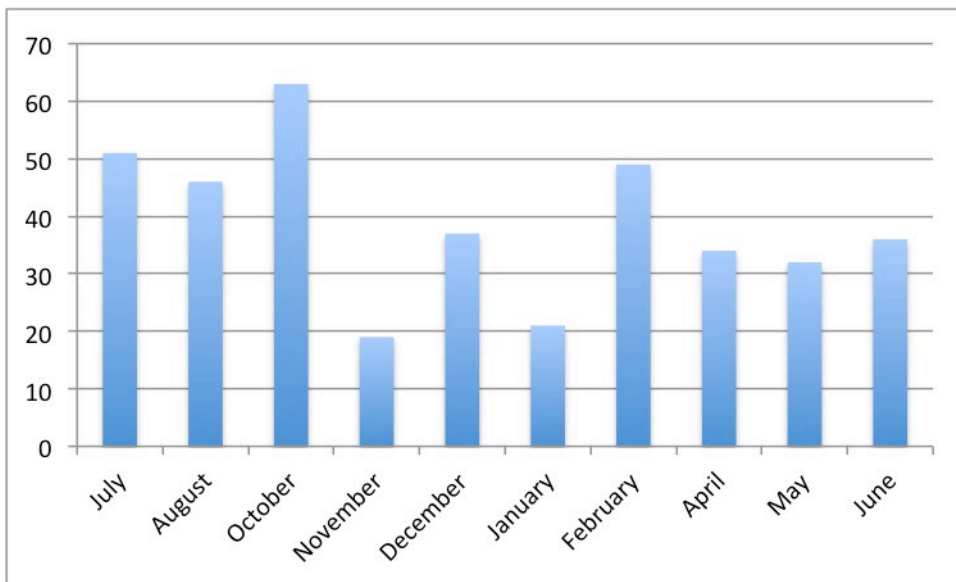
CEP 756 - School Crisis Intervention and Recovery

PREPaRE Workshop 2: *Crisis Intervention and Recovery: The Roles of School-Based Mental Health Professionals*

\*\*\*\*\*

**Total participants in Fall 2015 semester CCPE courses: 28 Students**

### NYSED Dignity for All Students Act (DASA) Training for Certification



**DASA Participants from July 1, 2015 – June 30, 2016**

**Total number of registrants: 366 students**



## Financial Report

<b>Beginning balance of IFR</b>	<b>\$45,797.59</b>
<b>Beginning balance of UBF</b>	<b>\$67,104.18</b>
<b>Beginning Operating Budget</b>	<b>\$12,000.00</b>

### REVENUES

Gifts/Donations/Sponsorship:	<b>\$31,221.33</b>
Annual Conference Registration:	<b>\$3,905.00</b>
Presentation Fees:	<b>\$225.00</b>
Teaching (Course Materials):	<b>\$4,025.00</b>
DASA Training:	<b>\$19,444.50</b>
NASP (GA Sponsorship):	<b>\$12,672.00</b>
Grants (Salary Recovery):	<b>\$5,919.00</b>
<b>Total:</b>	<b>\$77,411.83</b>

### OPERATING EXPENSES

#### Program Services:

Annual Conference:	\$7,319.38
Early Career Award:	\$1,105.00
Hospitality (Airlines/Hotels/Meeting):	\$2,518.42
DASA Training:	\$16,500.00
Resource/Teaching Materials:	\$1,612.90

#### Facilities and Administrative:

GUSF & Epay Fees:	\$4,633.56
Personnel:	\$27,325.00
Staff Travel & Registrations:	\$989.88

#### Other Expenses:

Office Supplies/printing:	\$2,037.99
Equipment/Software:	\$1,986.53
Sponsorships:	\$1,270.00
Marketing:	\$396.23

<b>Total:</b>	<b>\$67,694.89</b>
---------------	--------------------

### YEAR END BALANCES

**State Operating Funds (Dean's Office) – 0.00**

**UBF Account – \$77,060.37**

**IFR Account – \$62,727.51**