



# Alberti Center for Bullying Abuse Prevention

**Annual Report**

**July 1, 2014 – June 30, 2015**

## ALBERTI CENTER TEAM

**Dr. Jean M. Alberti**, Benefactor

**Dr. Amanda B. Nickerson**, Director

**Brie Kishel**, Program and Operations Manager

**Dr. Kathleen Allen**, Training and Evaluation Specialist

**Jilynn Werth**, Graduate Assistant

**Erin Cook**, Graduate Assistant

**Toni Torchia**, Student Programming Specialist

**Michele Crandall**, Research Assistant

**Joseph Prior**, Research Assistant

**Tiara Handy**, Research Assistant

**Samantha VanHout**, Research Assistant

**Dr. Danielle Guttman**, Research Associate (Adjunct)



## ALBERTI CENTER MISSION

*The mission of the Alberti Center is to reduce bullying abuse in schools and in the community by contributing knowledge and providing evidence-based tools to effectively change the language, attitudes, and behaviors of educators, parents, students, and society. The center will be a national resource on the prevention of bullying and other antisocial behaviors among school children, as well as provide research and information that address these behaviors.*

## HISTORY OF THE CENTER

*A generous gift from Graduate School of Education alumna Jean M. Alberti (Ph.D. '70, Educational Psychology) established the Dr. Jean M. Alberti Center for the Prevention of Bullying Abuse and School Violence (Alberti Center for Bullying Abuse Prevention) at the University at Buffalo. The center was introduced to the public on April 27, 2010, through its symposium, "Prevention of Bullying Abuse and School Violence," and was officially launched in July of 2011, when Amanda Nickerson, Ph.D., became the inaugural director.*

## STATEMENT OF CONTRIBUTIONS AND IMPACT

It has been another productive and exciting year as we work to fulfill our important mission. This annual report highlights our activities as they relate to the mission and vision of the center, the Graduate School of Education (GSE), and the University at Buffalo, the State University of New York. We showcase our partners, including faculty affiliates, advisory council members, research collaborators, funders, sponsors, award winners, and community members throughout this report. These collaborative partnerships are the cornerstone of our work.

In relation to our mission of contributing knowledge, the Alberti Center affiliated faculty have published their work in peer refereed journal in various fields and presented at numerous professional conferences. Faculty members have been very active in pursuing and securing external funding for research and evaluation projects and have received honors and appointments in recognition of their scholarship. Finally, the Alberti Center has supported the contributions of exceptional early career scholars in the field of bullying abuse prevention through its annual award.



Our engagement, through interprofessional collaboration and providing evidence-based tools to our schools and communities for a better quality of life, continues to be a critical part of the mission of the Alberti Center, the GSE, and UB. In this report, we recognize our advisory council, consisting of internationally renowned scholars, and pillars of the Western New York community representing the fields of law, education, psychiatry, and human services. We also note the multiple presentations we have conducted in

schools and communities. Our various sponsored events, including our annual conference, colloquium series, BAND Against Bullying performing arts competition for area high schools, and many others, are highlighted in this report.

The Alberti Center actively supports the GSE's pedagogy of inquiry, engagement, and impact. Our contributions in this area have benefitted both UB students as well as practitioners through the Center for Continuing and Professional Education and as New York Stated Education Department approved provider of the Dignity for All Students Act training. It is an honor to be able to collaborate with such talented and generous partners in working to reduce bullying abuse in our schools and communities.

## CONTRIBUTING KNOWLEDGE

### Peer Refereed Journal Articles

**Allen, K. P.** (2015). "We don't have bullying, but we have drama": Understandings of bullying and related constructs within the social milieu of a U.S. high school. *Journal of Human Behavior in the Social Environment*, *25*, 159-181.

Fishman, C., & **Nickerson, A. B.** (2015). Motivations for involvement: A preliminary investigation of parents of students with disabilities. *Journal of Child and Family Studies*, *24*, 523-535.

Godleski, S. A., Kamper, K. E., **Ostrov, J. M.**, Hart, E. J., & Blakely-McClure, S. J. (2015). Peer victimization and peer rejection during early childhood. *Journal of Clinical Child and Adolescent*. *44*, 380-392.

**Ostrov, J. M.** (2015). Introduction to special issue in memorial of Nicki R. Crick: Development of peer victimization in children and adolescents. *Journal of Clinical Child and Adolescent Psychology*. *44*, 363-366.

**Ostrov, J. M.**, & Guzzo, J. L. (2015). Prospective associations between prosocial behavior and social dominance in early childhood: Are sharers the best leaders? *The Journal of Genetic Psychology*, *176*, 130-138.

**Ostrov, J. M.**, & Kamper, K. E. (2015). Future directions for research on the development of relational and physical peer victimization. *Journal of Clinical Child and Adolescent Psychology*, *44*, 509-519.

**Werth, J. M.**, **Nickerson, A. B.**, **Aloe, A. M.**, & Swearer, S. M. (2015). Bullying victimization and the social and emotional maladjustment of bystanders: A propensity score analysis. *Journal of School Psychology*, *53*, 295-308.

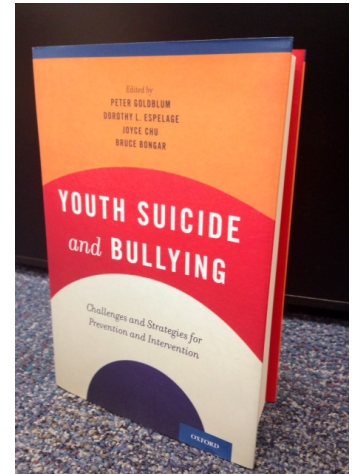
### Book Chapters

**Nickerson, A. B.**, Savage, T. A., & Woitaszewski, S. A. (2015). School crisis prevention and intervention: Emergency preparedness and response. In R. H. Witte & S. Mosley-Howard (Eds.), *Mental health practice in today's schools: Issues and interventions* (pp. 399-418). New York: Springer.

**Nickerson, A. B.**, & **Torchia, T.** (2015). The mental health impact of bullying. In P. Goldblum, **D. Espelage**, J. Chu, & B. Bongar (Eds.), *The challenges of youth bullying and suicide* (pp. 39-49). New York: Oxford University Press.

Brock, S. E., **Nickerson, A. B.**, Reeves, M. A., & Jimerson, S. R. (2014). Best practices for school psychologists as members of crisis teams: The PREPaRE model. In A. Thomas & J. Grimes (Eds.), *Best practices in school psychology V* (pp. 1487-1504). Bethesda, MD: National Association of School Psychologists.

Jimerson, S. R., Ruderman, M., **Nickerson, A. B.**, & Miller, D. N. (2014). School-based interventions and quality of life/subjective-well-being. In A. C. Michalos (Ed.), *Encyclopedia of quality of life research* (pp. 5721-5728). New York: Springer Science.



## Articles for Practitioners (Peer Refereed)

**Orrange-Torchia, T., & Nickerson, A. B.** (2014). The Alberti Center for Bullying Abuse Prevention: A resource for school psychologists and beyond. *New York School Psychologist*, 32(2), 4, 38-39.

National Association of School Psychologists [Writing group Furlong, M. J., **Nickerson, A. B.**, & Pesce, R.]. (2014). *Position statement on youth violence*. Bethesda, MD: Author.

## Technical Report

**Nickerson, A. B., Allen, K. P., & Werth, J. M.** (2014). *Bullying and individuals with disabilities: Need assessment and strategic planning*. Final grant report for a study funded by the New York State Developmental Disabilities Planning Council.

## Professional Presentations

**Guttman, D.** (2014, November). *Promoting wellness: Providing PD about internalizing disorders*. Paper session presented at the meeting of the New York State Association of School Psychologists 2014 Annual Conference, Albany, N.Y.

**Allen, K. P., & Werth, J. M.** (2014, November). *Bullying and individuals with disabilities: Needs and future directions*. University of Rochester Disability Studies Cluster Symposium, Rochester, NY.

**Werth, J. M., Nickerson, A. B., Allen, K. P., & Cook, E. E.** (2015, February). *Bullying and individuals with disabilities: Needs and future directions*. Poster presented at the annual meeting of the National Association of School Psychologists, Orlando, FL.

**Guttman, D.** & Levine, R. (2015, February). *Promoting well-being in early childhood: Results from a teacher intervention*. Poster session presented at the meeting of the National Association of School Psychologists 2015 Annual Convention, Orlando, FL.

**Nickerson, A. B., Reynolds, A., & Treadway, D.** (2015, June). *The impact of bullying in schools and the workplace*. Presentation at Networking in Higher Ed Conference, Buffalo, NY.

**Livingston, J. A.,** Derrick, J. L., Miller, K. E., Testa, M., & **Nickerson, A. B.** (2015, June). Family cohesion moderates the effects of bully victimization on adolescent alcohol use. Poster presented at the annual meeting of the Research Society on Alcoholism, San Antonio, TX.

## Invited Professional Presentations:

**Nickerson, A. B.** (2014, August). *PREPaRE School Crisis Prevention and Intervention Training of Trainers*. Workshop presented at the Western Suffolk BOCES, Wheatley Heights,,NY.

**Nickerson, A. B.** (2014, November). *Building social-emotional strengths to prevent bullying and violence*. Invited workshop presented at the annual meeting of the British Columbia Association of School Psychologists, Vancouver, British Columbia.

**Nickerson, A. B.,** Zwick, S. R., & Jason, K. (2014, December). *PREPaRE School Crisis Prevention and Intervention Training*. Workshop presented at the Western Suffolk BOCES, Wheatley Heights, NY.

**Allen, K. P.** (2014, December). *Bullying and individuals with disabilities: Needs assessment*. Bullying and Youth with Disabilities Conference, Brooklyn, NY.

**Nickerson, A. B.** (2015, March). *School safety and crisis response: Balancing physical and psychological needs*. Workshop presented at the 12<sup>th</sup> Annual Safe Schools Initiative Seminar, Buffalo, NY.

**Ostrov, J. M.** (2015, April) *Understanding bullying behavior in children*. UB Scholars on the Road lecture series. Brooklyn Children's Museum.

**Cook, E.** *PREPaRE Workshop 2: Crisis Intervention and Recovery: The Roles of School-Based Mental Health Professionals*. Workshop presented at the Hudson Falls Central School District, Hudson Falls, NY.

**Nickerson, A.B.** (2015, May) *Play (and live) with character: Preventing violence through leadership* at the Team Captain Leadership Seminar, ECC South Campus.

## Funded Research

Eiden, R., & **Nickerson, A.** (co-PIs); **Ostrov, J.,** Godleski, S., Schuetze, P., Wieczorek, W., & Lucke, J. (co-Is). "Developmental pathways of violence and substance use in a high risk sample." National Institute of Health (\$3,395,047). 7/1/2015-3/31/2020.

**Livingston, J.** (PI); Eiden, R., & Leonard, K. (Co-Is). "Developmental pathways of teen dating violence in a high-risk sample." National Institute of Justice. (\$798,396). 1/1/13 – 12/31/15.

**Livingston, J.** (PI); Kathleen Miller, Maria Testa, Jaye Derrick, Joe Lucke, & **Nickerson, A. B.,** (Co-Is). "Peer victimization as a pathway to adolescent substance use." National Institute for Alcohol Abuse & Alcoholism (\$1,883,110). 8/1/2013-7/31/2018.

**Nickerson, A. B. (PI).** "PREPaRE Crisis Prevention and Intervention Training Curriculum program evaluation." National Association of School Psychologists (\$63,888). 8/15/2011-8/14/2016.

**Nickerson, A. B., & Allen, K. P.** (co-PIs): "Bullying prevention and individuals with disabilities." New York State Developmental Disabilities Planning Council (\$50,000). 12/1/2013-11/30/2014.

**Ostrov, J. M.** (PI): "The development of forms and functions of aggression during early childhood" National Science Foundation (\$550,000). Start date: 3/1/2015.

## Grant Proposals Submitted

**Nickerson, A., & Jimerson, S.** (co-PIs); Brock, S., & Marcoulides, G. (co-Is). "Impact of comprehensive school safety training on preparedness, interdisciplinary collaboration, and school climate." Under review at National Institute of Justice (\$2,162,048).

**Livingston, J., & Nickerson, A.** (co-PIs). "Evaluation of Second Step family videos to promote child personal safety." Under review at the Committee for Children (\$250,000).

## Honors and Appointments

**DeLucia-Waack, J.** | Editorial Board Member: *Group Dynamics: Theory, Research, and Practice* (2008-2014)  
*Journal for Specialists in Group Work* (2010-2013)

**Kishel, B.** | Community Advisory Committee, Center for Disabilities Studies at UB  
Executive Board, Disability Education and Advocacy Network (DEAN) of WNY

**Nickerson, A. B.** | Fellow, American Psychological Association (Division 16)  
Member, Technical Review Panel, National Center for Education Statistics School  
Survey on Crime and Safety (8/14-10/14)  
Advisory Member, Long Island School Practitioner Action Network (1/15-present)  
Advisory Committee Member, BAND Against Bullying (11/12-present)

**Reynolds, A.** | Fellow, American Psychological Association Div. 17 (Society of Counseling Psychology)

**Treadway, D. C.** | Founding Fellow, U.S. Academy on Workplace Bullying, Mobbing, and Abuse

## Alberti Center Early Career Award (2014)

**RECIPIENT – Jennifer Greif Green, Ph.D.**, Assistant Professor | Elementary, Early Childhood, & Special Education | Boston University

**EXPERTISE/INTERESTS:** Jennifer Greif Green is an Assistant Professor in Special Education and a child clinical psychologist. Her research focuses on understanding the role of schools in providing services to students with emotional and behavioral disorders. She is particularly interested in how teachers can contribute to facilitating early identification of students who may benefit from mental health services, as one way to reduce disparities in mental health service access. Dr. Green also studies school bullying. She specializes in assessing bullying and determining how assessments can be used to inform school safety planning. Jennifer has collaborated with a number of local schools to provide feedback on student bullying experiences.



### RELEVANT PUBLICATIONS

**Green, J.G.**, Felix, E.D., Sharkey, J.D., Furlong, M.J., Kras, J.E.\* (2013). Identifying bully victims: Definitional versus behavioral approaches. *Psychological Assessment*, 25, 651-657.

**Green, J.G.**, Dunn, E.C., Johnson, R.M., & Molnar, B.E. (2011). A multilevel investigation of the association between school context and adolescent nonphysical bullying. *Journal of School Violence*, 10, 133-149.

Johnson, R.M., Kidd, J.D., Dunn, E.C., **Green, J.G.**, Corliss, H.L., & Bowen, D. (2011). Associations between caregiver support, bullying, and depressive symptoms among sexual minority and heterosexual girls: Results from the 2008 Boston Youth Survey. *Journal of School Violence*, 10, 185-200.

**Green, J.G.**, Furlong, M. J., Astor, R., Benbenishty, R., & Espinoza, E. (2011). Assessing school maltreatment in the United States, Guatemala, and Israel: A psychometric analysis of the School Victimization Scale. *Victims & Offenders*, 6, 290-305.

- Felix, E.D., Sharkey, J.D., **Green, J.G.**, Furlong, M.J., Tanigawa, D. (2011). Getting precise and pragmatic about the assessment of bullying: The development of the California Bullying Victimization Scale. *Aggressive Behavior*, 37, 234-247.
- Furlong, M. J., Sharkey, J. D., Felix, E. D., Tanigawa, D., & **Green, J.G.** (2010). Bullying assessment: A call for increased precision of self-reporting procedures. In S. R. Jimerson, S. M. Swearer, & D. L. Espelage. *The International Handbook of School Bullying*, p. 329-346. New York: Routledge.
- Felix, E. D. & **Green, J.G.** (2010). Popular Girls and Brawny Boys: The Role of Gender in Bullying and Victimization Experiences. In S. R. Jimerson, S. M. Swearer, & D. L. Espelage. *The International Handbook of School Bullying*, pp. 173-186. New York: Routledge.
- You, S., Furlong, M. J., Felix, E., Sharkey, J. D., Tanigawa, D., & **Green, J.G.** (2008). Relations among school connectedness, hope, life satisfaction, and bully victimization. *Psychology in the Schools*, 45, 446-460.
- Greif, J. L.**, & Furlong, M. J. (2006). The assessment of school bullying: Using theory to inform practice. *Journal of School Violence*, 5, 33-50.

## ENGAGING: INTERPROFESSIONAL COLLABORATIONS AND EVENTS

### Advisory Council

**Helen R. Aronoff, M.D.**, Associate Professor of Psychiatry | UB School of Medicine & Biomedical Sciences

**Lana D. Benatovich**, President | National Federation for Just Communities of WNY

**Vito Borrello**, Executive Director | National Association for Family, School, and Community Engagement (NAFSCE)

**Anna R. Cieri, Ph.D.**, Assist. Superintendent for Exceptional Education and Student Services | Williamsville Central School District

**Dewey G. Cornell, Ph.D.**, Professor of Education and Endowed Chair | University of Virginia

**Janice L. DeLucia-Waack, Ph.D.**, Associate Professor in Counseling, School, and Educational Psychology | University at Buffalo

**Dorothy L. Espelage, Ph.D.**, Professor, Education Psychology | University of Illinois at Urbana-Champaign

**Bruce Goldstein**, Senior Partner | Goldstein, Ackerhalt & Pletcher, LLP

**Mary H. Gresham, Ph.D.**, Vice Provost for Educational Collaboration and Engagement | UB

**Jane Ogilvie**, Division Director of Community Youth Development | Erie 1 BOCES

**Jamie M. Ostrov, Ph.D.**, Associate Professor of Psychology | University at Buffalo

**Debra Pepler, Ph.D.**, Distinguished Research Professor | York University



**Amy L. Reynolds, Ph.D.**, Associate Professor in Counseling, School, and Educational Psychology | UB

**Reed Stewart, LCSW-R**, Program Director, Beacon Health Strategies

**Susan M. Swearer, Ph.D.**, Professor of School Psychology | University of Nebraska-Lincoln

**Kevin Penberthy, LCSW**, Deputy Director, Regional Office | New York State OPWDD

## Faculty Affiliates

**Ariel Aloe, Ph.D.**, Research Scientist in Graduate School of Education | University at Buffalo & Assistant Professor, Educational Psychology and Foundations | University of Northern Iowa

**Laura Anderson, Ph.D.**, Assistant Professor in School of Nursing | University at Buffalo

**Catherine P. Cook-Cottone, Ph.D.**, Associate Professor in Counseling, School, and Educational Psychology | University at Buffalo

**Janice L. DeLucia-Waack, Ph.D.**, Associate Professor in Counseling, School, and Educational Psychology & Program Director of School Counseling | University at Buffalo

**Jennifer Livingston, Ph.D.**, Research Scientist, Research Institute on Addictions | University at Buffalo

**Jamie M. Ostrov, Ph.D.**, Associate Professor of Psychology | University at Buffalo

**Amy L. Reynolds, Ph.D.**, Associate Professor in Counseling, School, and Educational Psychology | University at Buffalo

**Darren Treadway, Ph.D.**, Associate Professor in Organization and HR | University at Buffalo

## Presentations in the Community

**Upward Bound Speaker Series** (July 2014)

**Nichols School** (August 2014)

**Nichols School** (September 2014)

**Amherst School District** (October 2014)

**Lovejoy Discovery School** (October 2014)

**North Collins School District** (November 2014)

**Mount Mercy** (January 2015)

**Holland Central Schools** (February 2015)

**National Federation for Just Communities (NFJC) 1<sup>st</sup> Annual IEEE Youth Leadership Conference** (May 2015)



**Team Captain Leadership Seminar at ECC South Campus** (May 2015)

**DASA Training for NYC Charter Schools** (May 2015)

**NFJC Youth Leadership Conference at Medaille College** (May 2015)

**Networking in Higher Ed Conference** (June 2015)

## 2014-2015 Colloquium Series



**September, 2014 – David V. Whalen**, Founder & Project Director  
Disability Awareness Training | Niagara University

*How Lack of Education on Disabilities Promotes Bullying: What You Need to Know to Prevent It*

21 Attendees



**November, 2014 – Matthew Grizzard, Ph.D.**, Assistant Professor | Department  
of Communication | University at Buffalo

*The Moral Sandbox of Media Entertainment*

25 Attendees



**February, 2014 – V. Paul Poteat, Ph.D.**, Associate Professor | Counseling and  
Developmental Psychology | Boston College

*Advancing Research on Bias-based Bullying and Intervention Approaches*

41 Attendees



**April, 2014 – Gregory A. Fabiano, Ph.D.**, Associate Professor | Counseling, School, and  
Educational Psychology | University at Buffalo

*Effective Approaches for Promoting Prosocial Behavior*

34 Attendees

## Alberti Center Annual Conference - October 2, 2014

### Keynote Presentation:

#### ***It Isn't IS Brain Science: Media Violence as a Risk Factor Aggression***

**Douglas Gentile, Ph.D.**, Associate Professor of  
Developmental Psychology | Iowa State University



### Breakout Sessions

#### ***Aggression and Bullying Subtypes among Young Children: Risk Factors, Assessment, and Treatment***

**Jamie Ostrov, Ph.D.**  
Associate Professor of Psychology | University at Buffalo

#### ***Creating Safe Spaces for LGBTQ Youth*** \* Sponsored by embraceWNY

**Amy L. Reynolds, Ph.D.**  
Associate Professor | Department of Counseling, School, and Educational Psychology | University at Buffalo

**Anne Nowak, MS, LMHC**  
Director | Family Support Center | Sweet Home Central School District

**(Ms.) Marvin L. Henchbarger, MAT, MEd**  
Executive Director | Gay and Lesbian Youth Services (GLYS) of WNY, Inc.

#### ***The Intersection of Social Media and Student Bullying***

**Michael Pregot, Ph.D.**  
Coordinator of Educational Leadership Programs | Long Island University

#### ***Understanding Online Disinhibition: The Good, The Bad, and The Ugly***

**Kathryn Levy**  
Doctoral Student | School of Social Work | University at Buffalo

#### ***Bullying and Individuals with Disabilities: Needs Assessment Findings***

**Amanda Nickerson, Ph.D.**  
Associate Professor and Director | Alberti Center for Bullying Abuse Prevention |  
University at Buffalo

**Jilynn Werth**  
Doctoral Student | Combined Counseling and School Psychology Program |  
University at Buffalo

#### ***The Dignity for All Students Act Roundtable Discussion***

**Nanci Monaco, Ph.D.**  
Licensed Psychologist and Associate Professor | Child and Adolescent Psychology in the EER Department | Buffalo State College  
**Mark Schachter, Ph.D.** | Licensed Psychologist

## Poster Sessions

### ***Humane Education and Animal Cruelty: How Do These Relate To Empowering Kindness and Decreasing Violence?***

Pamela Hylinger, Director of Humane Education & Mary Jo Sicurella, Humane Educator | SPCA Serving Erie County

### ***Perspective of Victims of Severe Bullying***

Dr. Muhammad Waseem, Attending Physician | Lincoln Hospital

### ***Relational Bullying and Deception in Early Childhood***

Kimberly Kamper, Graduate Student | University at Buffalo

### ***Understanding the Role of Social Support and Gender on the Association Between Relational Victimization and Self-concept***

Sarah Blakely-McClure, Doctoral Student & Dr. Jamie Ostrov, Associate Professor of Psychology | University at Buffalo

## Alberti Center Annual Conference - Sponsors

### Platinum Sponsor

**embraceWNY**

### Gold Sponsors

**Buffalo Teachers Federation**

**Hodgson Russ**

**New York Association of School Psychologists**

**UB Graduate School of Education**

**UB Office of Equity, Diversity, and Inclusion**

### Silver Sponsors

**Pearson**



## Co-Sponsored Events



A variety of schools participate by hosting auditions and/or competitions that incorporate the arts within their own school, related to the theme of Dignity. The acts are encouraged to combine multiple forms of art to create the most dynamic illustration of dignity awareness. Each final act performs at the University at Buffalo Center for the Arts. It is an eventful evening, including valuable information on bullying awareness, exceptional talent and collaboration among students, and an opportunity to raise money for the prevention of bullying in schools. Proceeds benefit each participating school, and the continued development of the BAND Against Bullying Program.

BAND Against Bullying III (April 2015) Sponsored by Hodgson Russ

"Spread the Word to End the Word" Event (March 2015)

Safe Schools Initiative Seminar (March 2015)

2015 SRCD Peer Relations Conference (March 2015)

Developmental Disabilities Awareness Day (May 2015)



## Alberti Center Presence at Other Events/Venues

**"Bullying Stops Here" event at Downtown Buffalo Library** (October 2014)

**Disability History Week Celebration** (October 2014)

**Champions for Change Youth Leadership Conference** (October 2014)

**Safe and Seen Halloween Event Sponsored by Make-a-Wish Foundation** (October 2014)

**NFJC Conference** (November 2014)

**Educator's Seminar Sponsored by Character Council of WNY** (November 2014)

**"Adopt a Family" Sponsored by UB** (December 2014)

**Starpoint Health and Wellness Fair** (February 2015)

**"Spread the Word to End the R Word" event at Buffalo Downtown Library** (March 2015)

**Wellness Fair at Williamsville North High School** (March 2015)

**Embrace the Brunch Sponsored by embraceWNY** (April 2015)

**Embrace the Difference "Giveback Day"** (April 2015)



## Media Coverage & Press Releases

[Erie County Office for the Disabled helps 'Spread the Word to End the Word'](#) – Niagara Frontier Publications, 3/6/15

[Anti-bullying activist calls Richie Incognito signing 'slap in the face'](#) – Sportal, 2/12/15

[Incognito signing upsets Buffalo anti-bullying group](#) – msn News, 2/12/15

[Local anti-bullying activists wary of Bills adding Incognito](#) NBC Sports, 2/12/15

[Richie Incognito insists he's not a racist](#) – Huffington Post Sports, 2/12/15

[Richie Incognito signing rankles Buffalo anti-bullying organization](#) – Fox Sports, 2/11/15

[N.Y. anti-bullying advocates aren't fans of Bills adding Richie Incognito](#) – Palm Beach Post, 2/11/15

['Football bully' coming to the Bills, expert weighs in](#) – WBFO 88.7, 2/11/15

[Player's past called 'hard to ignore'](#) – The Buffalo News, 2/11/15

[109 Schools in WNY Reported Zero Bullying Incidents](#) – WGRZ Channel 2 News, 2/1/15

[Talk of Building a Bully Sends the Wrong Message](#) – The Buffalo News, 1/21/15

[Was Ryan's 'Build a Bully' the Right Message?](#) – WBEN Radio 930, 1/20/15

[Children Exposure to Violence in the Media](#) – CW Channel 23 “Winging It” Program, 10/15/14

[Cyberbullying: Is there an answer?](#) – SUNY, Big Ideas, 8/15/14

[Indiana State Police Active Shooter Training Videos Anger Parents](#) – Fox News, Indiana, 7/24/14



## Social Media Efforts/Center Reach



**345 Followers**



**81 Members**



**411 Followers**

**Constant Contact**  **1106 Contacts**

## Pedagogy of Inquiry, Engagement, and Impact

### Center for Continuing and Professional Education (CCPE) Courses

**CEP 752 - Bullying Prevention and Intervention (online)**

\*\*\*\*\*

**CEP 754 - School Crisis Prevention and Preparedness**  
 PREPaRE Workshop 1: *Crisis Prevention and Preparedness: Comprehensive School Safety Planning*

\*\*\*\*\*

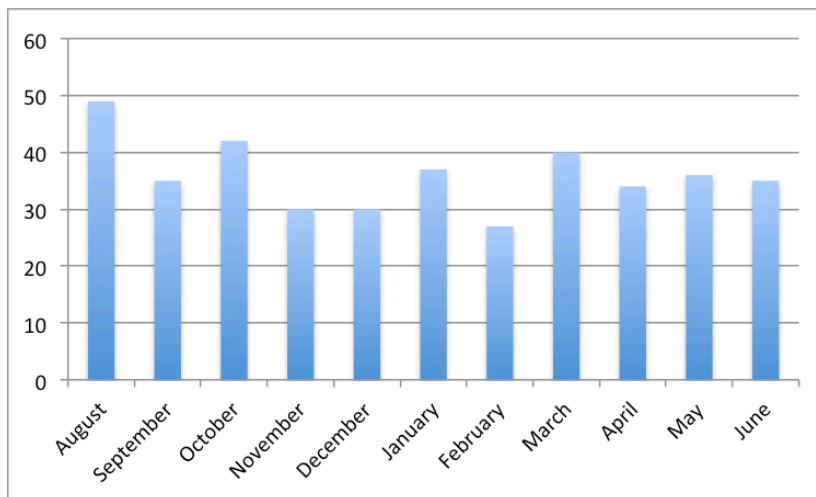
**CEP 756 - School Crisis Intervention and Recovery**  
 PREPaRE Workshop 2: *Crisis Intervention and Recovery: The Roles of School-Based Mental Health Professionals*

\*\*\*\*\*

**Total participants in Fall semester CCPE courses: 20 students**



### **NYSED Dignity for All Students Act (DASA) Training for Certification**



**DASA Workshop participants from August 2014 – June 2015: 397 students**

## Financial Report

### REVENUES

<b>Balance of IFR</b>	<b>\$7,852.37</b>
<b>Balance of UBF</b>	<b>\$68,800.06</b>
<b>Annual Operating Budget:</b>	<b>\$12,000.00</b>
Gifts and Donations:	\$26,844.96
Event Sponsorships:	\$4,275.00
Annual Conference:	\$9,758.10
GSE Sponsored Table:	\$900.00
Presentation Fees:	\$350.50
Teaching (Course Materials)	\$2,680.00
DASA Training	\$29,625.00
NASP (GA Sponsorship)	\$12,672.00
Grants	\$12,663.14
<b>Total:</b>	<b>\$ 188,421.13</b>

### OPERATING EXPENSES

<b>PROGRAM SERVICES</b>	<b>\$44,891.97</b>
Annual Conference	\$9,718.57
Early Career Award	\$1,500.00
Hospitality (Airlines/Hotels)	\$1,016.81
DASA Training	\$17,946.40
Resource/Teaching Materials	\$2,047.05
Grant Research	\$12,663.14
<b>FACILITIES AND ADMINISTRATIVE</b>	<b>\$33,351.68</b>
GUSF & Epay Fees	\$5,271.30
Personnel	\$27,325.00
Staff Travel & Registrations	\$755.38
<b>OTHER EXPENSES</b>	<b>\$8,972.35</b>
Office Supplies	\$2,993.85
Equipment/Software	\$1,645.67
Sponsorships	\$1,425.00
Marketing/Printing	\$2,907.83
<b>Total:</b>	<b>\$87,216.00</b>

### YEAR END BALANCES

<b>State Start-Up Funds (Dean's Office) - \$25.84</b>
<b>UBF account – \$67,104.18</b>
<b>IFR (SIRI) - \$45,797.59</b>